

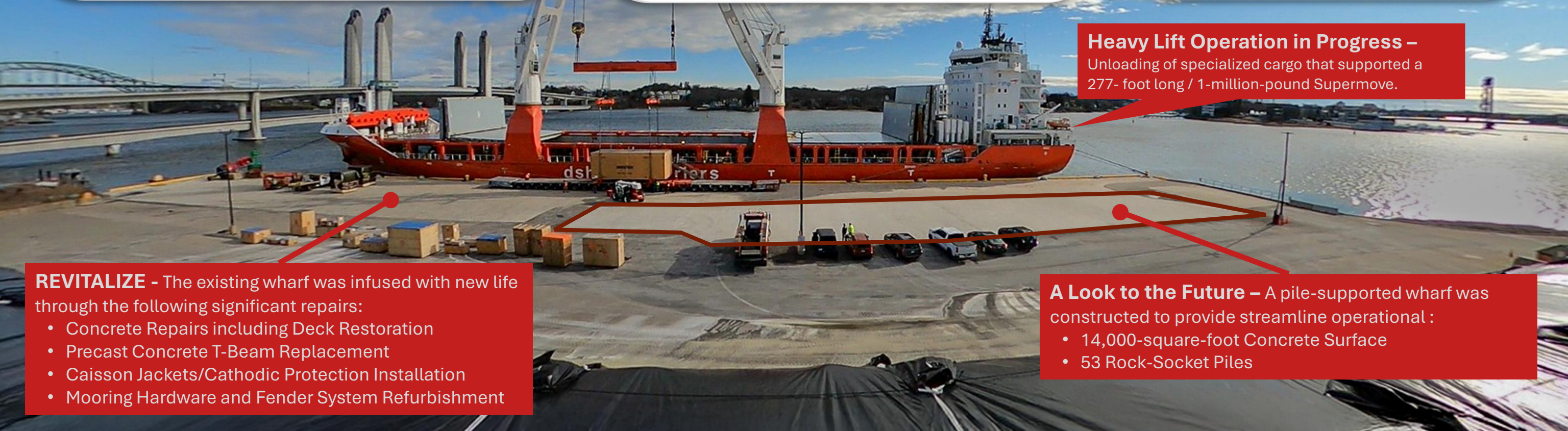
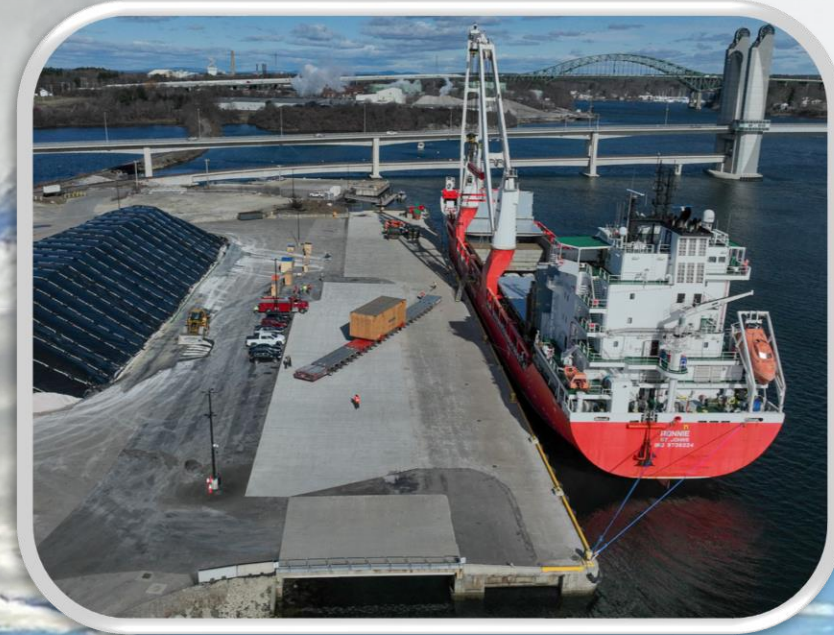
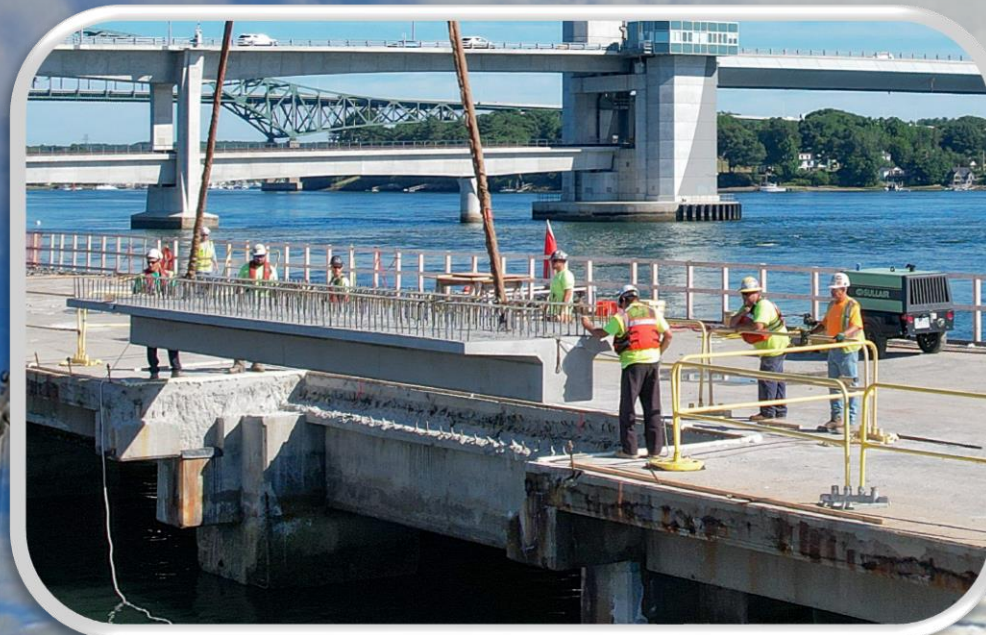
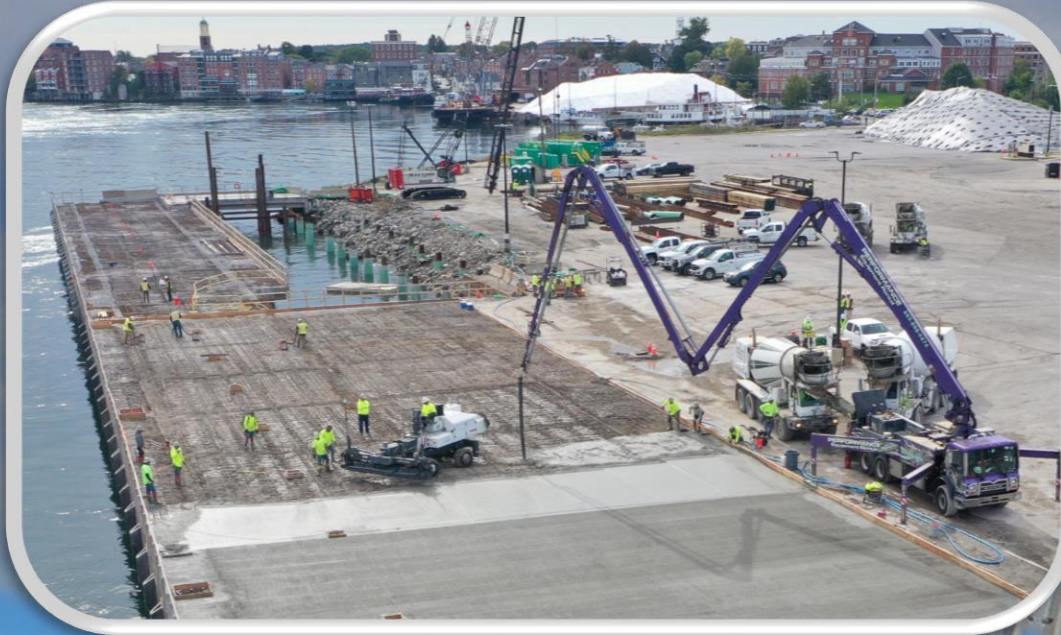
**Title:** Repurposing the Old and Preparing for the Future  
**Client:** Pease Development Authority, Port of New Hampshire  
**Designer:** Appledore Marine Engineering, LLC

**Permitting -** McFarland Johnson  
**Environmental -** Ransom Environmental  
**Geotechnical -** Haley and Aldrich

**Appledore Marine Engineering, LLC**



**ACEC-NH**  
AMERICAN COUNCIL OF  
ENGINEERING COMPANIES  
OF NEW HAMPSHIRE



**Heavy Lift Operation in Progress –**  
Unloading of specialized cargo that supported a  
277- foot long / 1-million-pound Supermove.

**REVITALIZE -** The existing wharf was infused with new life through the following significant repairs:

- Concrete Repairs including Deck Restoration
- Precast Concrete T-Beam Replacement
- Caisson Jackets/Cathodic Protection Installation
- Mooring Hardware and Fender System Refurbishment

**A Look to the Future –** A pile-supported wharf was constructed to provide streamline operational :

- 14,000-square-foot Concrete Surface
- 53 Rock-Socket Piles