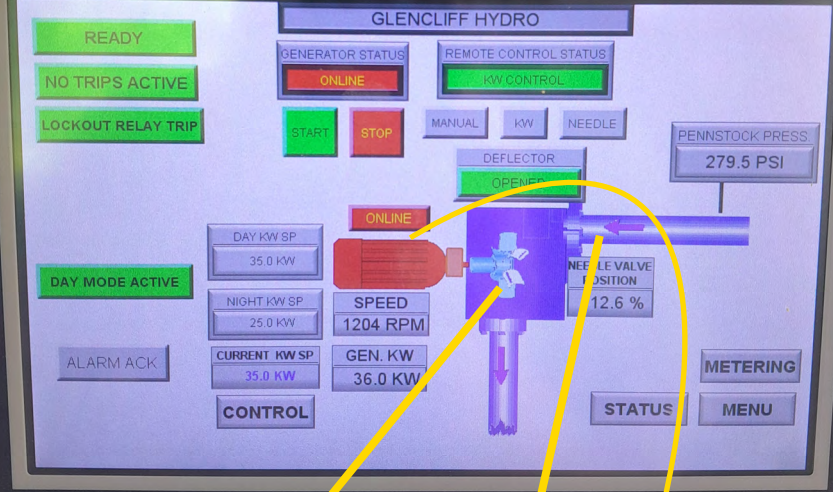


Main System

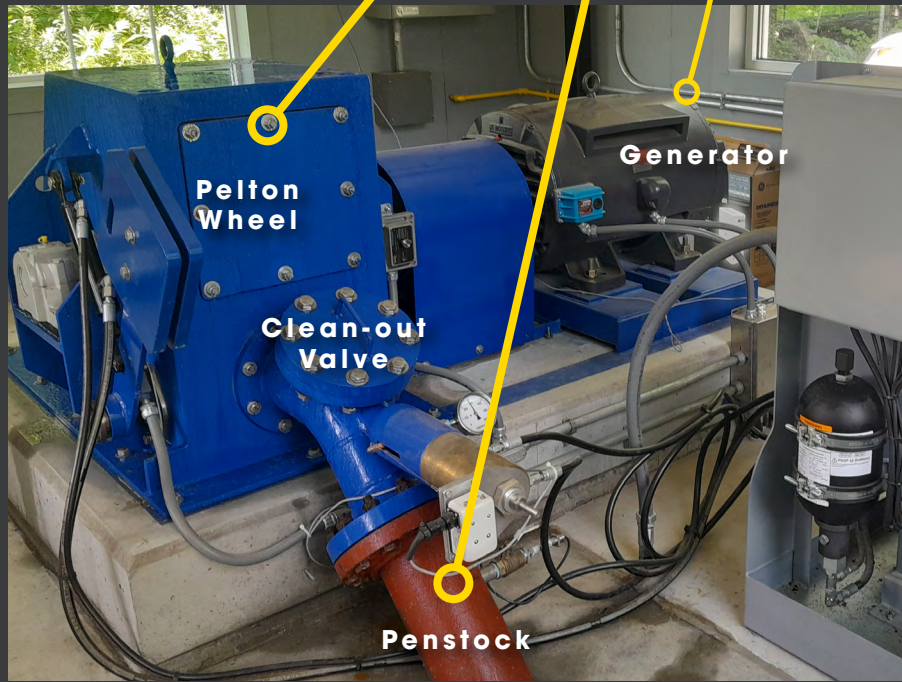


Slide Brook Impoundment



Slide Brook

Glenclyff Campus



Controls in Powerhouse

Total Penstock Length: 2mi
Vertical Difference: 700ft

Power lines along High Street return power from Hydro Building to the Campus

Hydro Building



- The off-grid Glenclyff Home in New Hampshire's White Mountains provides residential, long-term medical care to up to 120 residents.
- Glenclyff relies on a micro-hydroelectric system to provide a portion of its electricity. Micro-hydroelectric systems can produce up to 100kW of power and are not commonly used in the US.
- DuBois & King provided design services to increase electrical output, address maintenance challenges, and improve the system's operations to make it a reliable, productive source of renewable electricity.
- The design of the micro-hydro system required D&K engineers to "think-small," complicating typical issues addressed in the design of a hydroelectric system, such as how to remove debris blocking the flow of water into the turbine that decreases the electrical output.
- D&K successfully worked with staff at Glenclyff and NHDAS to align and achieve each stakeholder's goals and priorities for the project on time and on budget.

GLENCLIFF Micro-Hydro Project